

architectural panel  
products



## ARCHITECTURAL PANELS

---

Setting the standard for wall panels and  
wall panel design

EXCLUSIVELY DISTRIBUTED BY

**DUNDAS &  
MATHESON**  
ARCHITECTURAL PRODUCTS



## Architectural Panels

# FAÇADE SYSTEM

---

Façade is a non progressive steel frame system that enables the attachment of virtually any panel type with multiple thicknesses, shapes and optional characteristics in the same elevation. Panel Types include HPL, Real Wood Veneer, Phenolic and CompactWood®. The system options include stand-off arrangements allowing the panels to be pushed away from the wall to accommodate utilities and services behind the panels. Additionally partial weight transfer to the floor enables heavy panels to be supported without compromising the integrity of the wall. Panel Types with backlighting and acoustical absorption are both available on this system.



## System Information

# FAÇADE

Wherever there is a need for architectural wall panels, AAM's Façade System is a smart solution. Fully integrated system components include steel supports and concealed fixing hardware, fully machined panels complete with pre-machined and installed fastening anchor points, and multiple reveal and panel edge options. The net result is a modular solution that is tailored to the unique needs and aesthetic demands of your project.

All the panels are pre-machined with metal inserts in the panels to accept fasteners, making for the fastest and most accurate possible installation of panels. HPL Architectural Panels on the Façade system comprise 3/4" (18mm) MDF substrates and are available from 1/2" (12mm) to 4" (100mm)

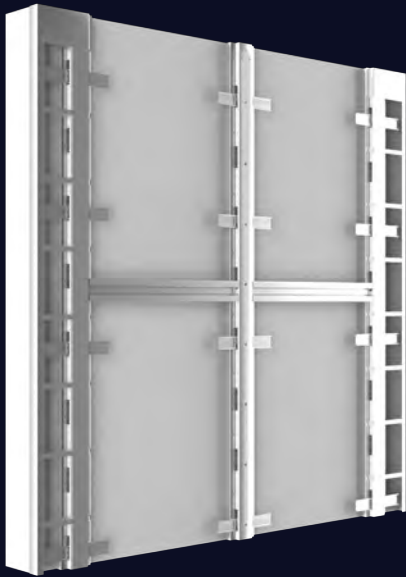


# FAÇADE SYSTEM



# EASY AS 1, 2, 3!

1



2



3





The image shows a modern building facade with large, vertical wooden panels. To the left, there is a lush green plant. A blue geometric shape, resembling a stylized roof or a large 'V', is overlaid on the lower half of the image. The text 'The timeless beauty of wood.' is written in a large, white, sans-serif font across the top half of the image.

# The timeless beauty of wood.

## Architectural Panels **GRID SYSTEM**

---

GRID is an aluminum frame system that is progressive with the ability to remove individual panels where necessary. Panel Types include HPL, Real Wood Veneer, Phenolic and CompactWood®. Not just aesthetically pleasing, this building façade system has been engineered to be extremely durable and highly resistance to impact damage. Also built with flexibility in mind, Panels can easily be installed horizontally or vertically as well as integrated with traditional construction methods and building systems.



## System Information

# GRID

---

The GRID Architectural Panel System makes it possible to clad walls of any type and in any condition. It is easy to install and a quick solution to refurbishing problems in rooms for which there are no special restrictions regarding the subsequent use of the premises.

The system can be installed directly on existing walls if they are sufficiently straight and dry. Should GRID be installed on old, damp or uneven walls, it is recommended to leave a gap between the wall and the GRID system. The GRID system can be installed on vertical or horizontal wood spacers or on a galvanized steel frame.



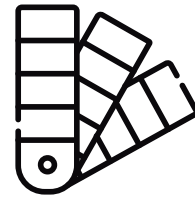
# GRID SYSTEM







# COLOR OPTIONS



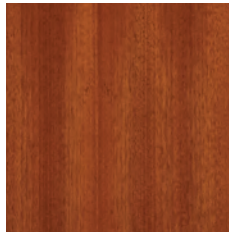
## COMPACTWOOD®



**Ebony Recon, QC**  
CW-QCREB-M-0410-12



**Teak, FC**  
CW-FCTEA-M-0410-12

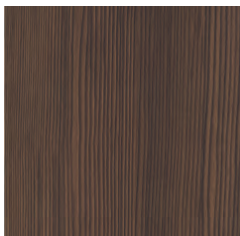


**Sapele, QC**  
CW-QCSAP-M-0410-12



**Anigre, QC**  
CW-QCANI-M-0410-12

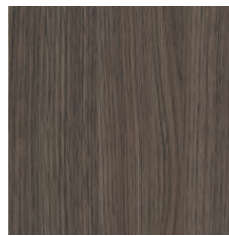
## CARBONZERO® & HPL



**Dark Larch**  
AAM1115



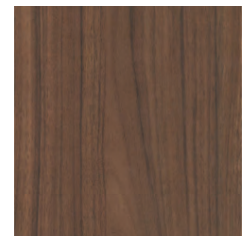
**Olive**  
AAM1127



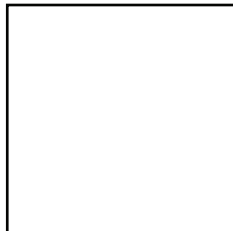
**Grey Oak**  
AAM1110



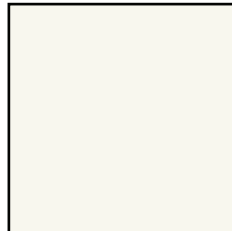
**Café**  
AAM1024



**Tuscan Walnut**  
AAM1122



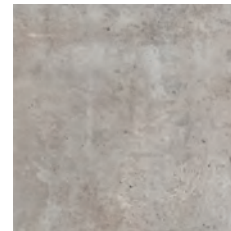
**White**  
AAM1196



**Polar White**  
AAM1018



**Stratus**  
AAM1026



**Modern Concrete**  
AAM1056



**Lead**  
AAM1176



Over **200** quality & stylish colors and species available on [www.millworkusa.com](http://www.millworkusa.com), please contact us with any questions on color or specie availability.



# Warranty

---

AAM warrants and represents to the customer that the workmanship of its products will be free from faults and defects of design, material and workmanship for one (1) year from the date of shipment. AAM's warranty obligation for its products is valid only for the standard application in which the wall panels are used when properly installed in accordance with applicable building codes, conditions indicated on our Shop Drawing Design, industry accepted standards and AAM's installation requirements.

AAM's liability is limited to the replacement only of goods deemed by AAM to be defective.

architectural panel  
products



844-307-9571

millworkusa.com

2825 Commerce Pkwy,  
North Port, Florida 34289  
USA

architectural panel  
products



EXCLUSIVELY DISTRIBUTED BY

**DUNDAS+  
MATHESON**  
ARCHITECTURAL PRODUCTS



CSR@DUNDASMATHESON.COM 1-888-316-2122  
DUNDASMATHESON.COM

Copyright ©American Architectural Millwork.  
2018. All Rights Reserved