

BASELINE RESTROOMS

By American Architectural Millwork

EXCLUSIVELY DISTRIBUTED BY

DUNDAS 
MATHESON
ARCHITECTURAL PRODUCTS



INTRODUCTION



Cubiform Restrooms offer a washroom experience for high quality commercial applications. Beautifully simple in it's modular design, the Cubiform Restroom unsurpassed in both quality and integrity.

PAGE OF CONTENTS

		PAGE	
I.	Introduction	02	▶
II.	Page of contents	03	▶
III.	Why Choose Cubiform?	04	▶
IV.	What Is Cubiform?	05	▶
V.	Configuration	06	▶
VI.	Typical Panel Arrangement	07	▶
VII.	Standard Hardware	08	▶
VIII.	Standard Hardware Cont.	09	▶
IX.	Compact Wood	10	▶
X.	HPL	11	▶
XI.	Compact	12	▶
XII.	Warranty	13	▶
XIII.	Quick Ship Colors	14	▶



Why Choose Cubiform?

The Future

Fully integrated system components include concealed hardware, total privacy flush face doors and pilasters, and integration with the Cubiform IPS Wall Lining System. With a wide range of colors, textures and finishes available, Cubiform Restrooms offer a range of natural and durable materials, delivering both visually stunning and high performance solutions without compromise.

The end result is a modular solution that is tailored to your unique aesthetic requirements. Wherever there is a need for washroom solutions, be it wood, HPL, compact wood or phenolic, Cubiform Restrooms are the smart solution.

Fully integrated system components include steel supports and concealed fixing hardware, fully machined panels complete with pre-machined and installed fastening clips, and multiple reveal and panel edge options results in a modular solution that is tailored to the unique needs and aesthetic demands of your project.

What is Cubiform?



Cubiform Cubicles are contemporary design
Wherever there is a need for privacy cubicles
Cubiform Cubicles are a smart solution. Fully
integrated system components include
concealed hardware, total privacy flush face
doors and pilasters, and integrated access
panels. The net result is a modular solution
that is tailored to the unique needs and
aesthetic demands of your project.



Configuration

Inline



Offset



Typical Panel Arrangement

Doors, Pilasters and Divider panels are standard 72" height (and can be up to 120" high). The doors and pilasters are precision machined so as to eliminate sight lines. Inline configuration provides doors and pilaster faces flush with one another. Offset configuration provides in-swing doors mounted to the back face of pilasters and out swing doors mounted to the front face of pilasters. The pedestal support provides adjustable ground clearance and keeps contact with the floor to the absolute minimum. This combination provides the most private, secure and clean restroom compartments available.



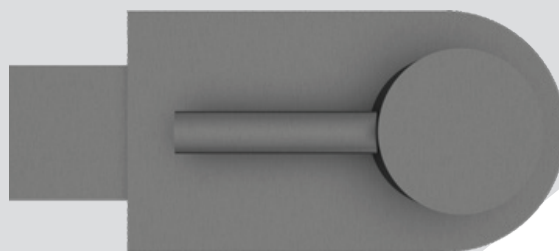
Standard Hardware

INDICATOR LOCK & KEEP

The Stainless Steel Door Lock contains a rotary indicator latch, which is operated by a rotating handle, that in the horizontal position locks the cubicle.

The Stainless Steel Indicator Latch Assembly is equipped with a red and white Occupied / Unoccupied indicator, and with an external emergency release feature.

All necessary hardware and mounting screws are included.

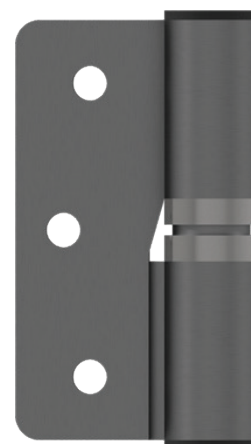


DOOR HINGE

The door hinge is supplied as a pack of 2 stainless steel hinges. The pack contains one floating hinge and one rise and fall hinge.

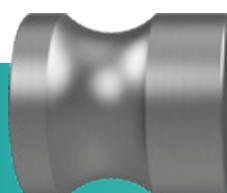
The hinge packs are handed to suit the door hanging and 1 hinge is pre set with a 15 degree opening angle (Top Hinge).

The hinges are fixed using the hinge screws (Hardware Provided).



DOOR PULL

The door pull is supplied as a pack of two stainless steel door pulls. For outswing doors only

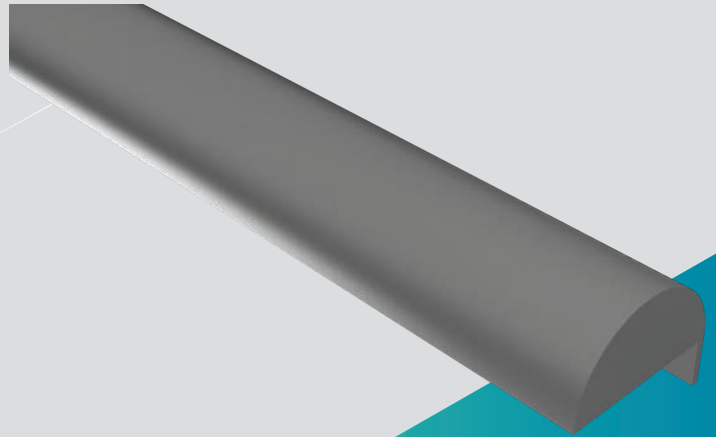


Standard Hardware

HEAD RAIL

The Cubicle D Head Rail is supplied in 118" lengths of anodized aluminum. This is fixed to the top of all pilaster's using Multi Purpose Screws supplied by installer.

Ensure that the cut end of the headrail is positioned at the pilasters edge of the cubicle module or flush against existing walls.



PEDESTAL

The Pedestals attach to pilasters or dividers with a Connector Bolt, which is included.

Hardware supplied for floor mounting included but may not be applicable to all floor types.

Note: Standard pedestals from 4 7/8" to a 6" max pedestal height. Options available from 2" to 12".

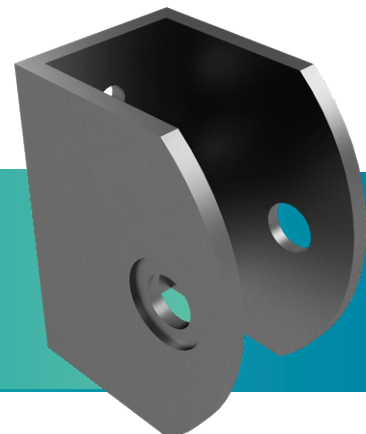


U-BRACKET

The Stainless Steel U - Bracket is used to fix the cubicle dividers pilasters to each other and existing walls.

Fixings incorporated include Tamper Proof Through Bolt for pilaster and divider and 3 Multi Purpose Screws, when fixing to an existing wall.

Hardware supplied for floor mounting included but may not be applicable to all floor types.



COMPACTWOOD

DURABLE, HIGH IMPACT, WATER RESISTANT

100 species to choose from, 18 in stock

Specie Selection:

24 standard species with over 100 custom species to choose from. Review color card for options.

Configuration:

Between Walls, Against Walls, In Corner, Ambulant, ADA

Door Types:

Flush Face, Full Height, Zero Sight Lines

Ground Clearance:

6" / 150mm adjustable
Optional: 2" - 12"

Hardware:

Stainless Steel

Optional: Powder Coat Aluminum



Compact Wood™ offers all the benefits of Phenolic with the beauty of natural real wood. Available in 24 standard species and over 100 custom species

Cubiform Compact Wood is a natural choice to add warmth and richness to almost any environment. Made exclusively from AA quality veneers, and available in over 100 species and cuts, the design choice is endless. Market segments include Corporate, Hospitality, Retail, Healthcare, Education, Public Buildings such as Airports and Transit Stations and Sporting Facilities such as Stadiums. Beautifully simple in its modular design, easy to specify, quick to install, and with a wide range of colors, textures and natural finishes, durable Cubiform Cubicles are unsurpassed in both quality and integrity.



Water Resistant



Scuff Resistant



Moisture Resistant



Fire Rated Options



High Impact



Price Guide

HPL

DURABLE, MOISTURE RESISTANT

Solid colors, Patterns and Woodgrain Finishes

Color Selection:

Over 100 solid colors, patterns and woodgrains to choose from with several texture options. Review color card for options.

Configuration:

Between Walls, Against Walls,
In Corner, Ambulant, ADA

Door Types:

Flush Face, Full Height,
Zero Sight Lines

Ground Clearance:

6" / 150mm
adjustable
Optional: 2" - 12"

Hardware:

Stainless Steel

Optional: Powder Coat
Aluminum,
Nylon.



Cubiform Phenolic is the toughest and most hygienic surface for harsh restroom environments. No sight lines, full height doors and pilasters and adjustable ground clearance makes Cubiform cubicles the most private available.

Cubiform HPL is a natural choice to add warmth and richness to almost any environment. Made exclusively from AA quality veneers, and available in over 100 species and cuts, the design choice is endless. Market segments include Corporate, Hospitality, Retail, Healthcare, Education, Public Buildings such as Airports and Transit Stations and Sporting Facilities such as Stadiums. Beautifully simple in its modular design, easy to specify, quick to install, and with a wide range of colors, textures and natural finishes, durable Cubiform cubicles are unsurpassed in both quality and integrity.



Water Resistant



Scuff Resistant



Moisture Resistant



Fire Rated Options



High Impact



Price Guide

SELECT COLORS AT WWW.CARBONZEROHPL.COM

COMPACT

DURABLE, HIGH IMPACT, WATER RESISTANT

Solid colors, Patterns and Woodgrain Finishes

Color Selection:

Over 600 solid colors, patterns and woodgrains to choose from with several texture options. Review color card for Carbonzerohpl.com

Configuration:

Between Walls, Against Walls,
In Corner, Ambulant, ADA

Door Types:

Flush Face, Full Height, Zero Sight Lines

Ground Clearance:

6" / 150mm adjustable
Optional: 2" - 12"

Hardware:

Stainless Steel

Optional: Powder Coat Aluminum, Nylon.



Cubiform Compact is the toughest and most hygienic surface for harsh restroom environments. No sight lines, full height doors and pilasters and adjustable ground clearance makes Cubiform cubicles the most private available.

Cubiform Compact is a natural choice to add warmth and richness to almost any environment. Made exclusively from AA quality veneers, and available in over 100 species and cuts, the design choice is endless.

Market segments include Corporate, Hospitality, Retail, Healthcare, Education, Public Buildings such as Airports and Transit Stations and Sporting Facilities such as Stadiums.

Beautifully simple in it's modular design, easy to specify, quick to install, and with a wide range of colors, textures and natural finishes, durable Cubiform Cubicles are unsurpassed in both quality and integrity.



Water Resistant



Scuff Resistant



Moisture Resistant



Fire Rated Options



High Impact



Price Guide

Warranty

The following AAM products are warranted to be free from defects in workmanship and material under normal usage from the date of purchase for the periods set forth below. (Rust and discoloration to stainless steel parts resulting from exposure to harsh environmental and/or chemical conditions are not considered to be defects in workmanship or material and there is no expressed or implied warranty for such condition.)

The following toilet partition panels, doors and stiles are warranted against breakage, corrosion, delaminating and defects in workmanship from the date of purchase for the periods set forth (this limited warranty is conditioned on the toilet partitions being properly installed, used and serviced).

HPL Toilet Cubicles

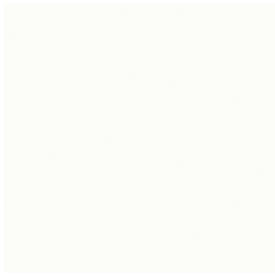
2 Years

Compact Toilet Cubicles

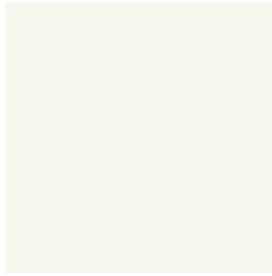
5 Years



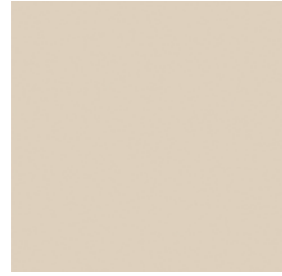
Quick Ship Options



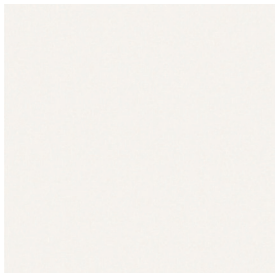
VANILLA
AAM1017



POLAR WHITE
AAM1018



CAFE
AAM1024



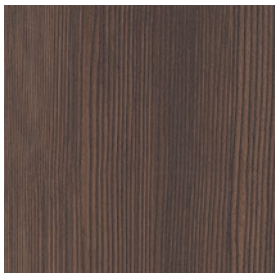
STRATUS
AAM1026



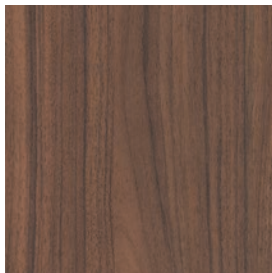
MODERN CONCRETE
AAM1056



GREY OAK
AAM1110



DARK LARCH
AAM1115



TUSCAN WALNUT
AAM1122



OLIVE
AAM1127



COAL
AAM1175

100'S MORE COLORS AVAILABLE FROM WWW.CARBONZEROHPL.COM, FOR INFORMATION PLEASE CONTACT: 1-888-316-2122





Baseline RESTROOMS

EXCLUSIVELY DISTRIBUTED BY

DUNDAS 
MATHESON
ARCHITECTURAL PRODUCTS

CSR@DUNDASMATHESON.COM 1-888-316-2122
DUNDASMATHESON.COM